

In **The Portal**, we discuss stellar performances of current players in Europe and identify comparable players in the NBA, exploring similarities in the style of play, statistical contributions by category, and impact on team success.

**Lorenzo Brown | Maccabi Tel Aviv**  
**North Carolina State University**

A dual citizen (USA/ESP), Brown leads Maccabi Tel Aviv in multiple statistical categories and will be relied on heavily if they are to remain in playoff contention (currently 8th), with 9 games to play in the Euroleague regular season



**Spencer Dinwiddie | Brooklyn Nets**  
**University of Colorado-Boulder**

A 9Yr. league veteran, Dinwiddie returned to the Nets via trade from the Mavericks in February and will need to produce at a high level if Brooklyn, 6th in the East, is to have any post-season success



**Numbers Story**

- Per Game Stats: 17.0 PTS, 3.2 REBs, 6.0 ASTs
- Gets Buckets: **Top 5 in Euroleague**, PTS/game
- Floor General: 6.0 ASTs/game, 3rd in EL
- Rim Attacker: 4.9 2PTM/game (as a PG)

**Team Impact**

Brown has started all 21 games he's played and leads Maccabi in **MPG (31:13), PTS, ASTs, and FGA**

- Seven >20PT games (as of 3/1)
- Big-game threat who can dominate at will

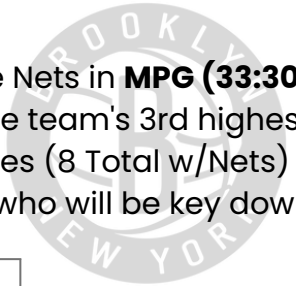
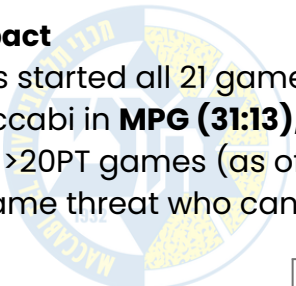
**Numbers Story**

- Per Game Stats: 17.7 PTS, 3.2 REBs, 5.4 ASTs
- Outside Threat: 2.6 3PTM/game, **Top 35 in NBA**
- Consistent Scorer: 70th in the NBA, PTS/game
- Effective Facilitator: 5.4 ASTs/game

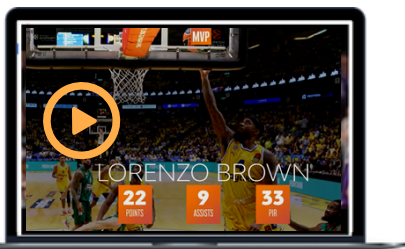
**Team Impact**

Dinwiddie leads the Nets in **MPG (33:30)**, assists per game, and is the team's 3rd highest scorer

- Four >20PT games (8 Total w/Nets)
- Key playmaker who will be key down the stretch



Per Game <b>Parallels</b>		
<b>13.9</b> FGA	<b>Balanced Attacked</b> Can produce consistently in the lane <u>and</u> from three	<b>13.0</b> FGA
<b>6.0</b> AST	<b>Seeks Distribution</b> Plays within the system and will work to find the open man	<b>5.4</b> AST
<b>43.2%</b> P&R	<b>Efficient Playmaking</b> Impacts the offense in a variety of ways, thrives in P&Rs	<b>43.8%</b> P&R



**Lorenzo Brown**

Essential to Maccabi's success



**Spencer Dinwiddie**

Bolstering the Nets backcourt

**On-Court Contrasts**

- **Offensive Focus:** Brown, at a 27.9% usage rate, is responsible for more production than Dinwiddie, 23.2%
- **Scoring Approach:** Dinwiddie shoots 6.4 3PTs/game compared to Brown's 4.7, (and shoots better, +3.9%)
  - Brown prefers to shoot off the dribble - 86.8% of his jumpers, Dinwiddie just 76.3%
- **Ball Security:** Despite playing more minutes, Dinwiddie turns the ball over less, 2.3 TOV/game to Brown's 3.0